

Coronavirus (COVID-19) Update

COVID-19 Daily Situation Update, WHO Regional Office for Africa

Epidemiological Week No. 40 | 1 October 2020

KEY HIGHLIGHTS

- In the past 24 hours (00:00, 29 September 2020 to 00:00, 30 September 2020), a total of **3 749** new confirmed COVID-19 cases were reported from **27** countries compared to **3 010** cases reported from 32 countries the previous day (29 September 2020). South Africa reported the highest daily number of new cases, at 1 767 (47%), followed by Ethiopia with 784 (21%), Nigeria (201), Mozambique (172), Algeria (162), Kenya (151), Cabo Verde (124), Angola (67), Côte d'Ivoire (55) and Zambia (44).
- **Sixty-nine** health worker infections were reported retrospectively from Uganda (65) and Eswatini (4).
- Although **United Republic of Tanzania** has no new confirmed cases in our database in the last **143** days, there is no official report indicating zero confirmed cases.
- A total of **99** new COVID-19 related deaths occurred in **eight** countries: South Africa (**67, 68%**), Algeria (**10**), Ethiopia (**7**), Kenya (**4**), Angola (**4**), Mozambique (**2**), Nigeria (**1**), Cabo Verde (**1**), Madagascar (**1**), Eswatini (**1**), and Lesotho (**1**), in the past 24 hours.
- The cumulative number of reported COVID-19 cases in the WHO African Region is **1 179 498**, including **1 179 497** confirmed and **one** probable case. South Africa accounts for **57%** (674 339) of all reported confirmed cases in the region.
- A total of **43 583** (3.7%) health workers from **43** countries has been infected, with South Africa having **63%** (27 360/43 583) of all the reported cases. Liberia **16.0%** (214/1 343), Niger **15.4%** (184/1 197) and Guinea-Bissau **12.1%** (282/2 324), have the highest country specific proportion of health worker infections among confirmed cases.
- The cumulative total of COVID-19 related deaths is **25 926**, reported from **45** countries, giving an overall case fatality ratio of **2.2%** in the region. South Africa **65%** (16 734/ 25 926), Algeria **6.7%** (1 736/ 25 926) and Ethiopia **4.6%** (1 198/ 25 926) have the highest proportion of all reported deaths. Chad (7.1%)*, Liberia (6.1%)*, Niger (5.8%), Mali (4.2%), Angola (3.7%), Algeria (3.4%) and Sierra Leone (3.2%) have the highest country specific case fatality ratios.
- As of 30 September 2020, a total of **989 277** (84%) case-patients from all the 47 countries have recovered from the disease.
- A cumulative total of **1 478 334** confirmed COVID-19 cases with **35 785** deaths have been reported in the African continent.

**Chad and Liberia are implementing community mortality surveillance that could be contributing to high case fatality ratios.*

EPIDEMIOLOGICAL UPDATE

WHO African Regional situation (as of 30 September 2020, 00:00 hours Brazzaville)

- The COVID-19 outbreak in the WHO African Region is gradually slowing down in the past couple of weeks, as shown in Annexes 1, 2 and 3.
- In the last 24 hours, a total of 3 749 new confirmed COVID-19 cases were reported from 24 countries (**Annex 3**) compared to 3 010 cases reported from 32 countries the previous day. South Africa reported the highest number of new cases, at 47% (1 767) of the new cases. Other countries that have reported high numbers of cases in the last 24 hours include Ethiopia with 784 (21%), Nigeria (201), Mozambique (172), Algeria (162), Kenya (151), Cabo Verde (124), Angola (67), Côte d'Ivoire (55), Zambia (44), Senegal (37), Madagascar (31), Togo (25), Eswatini (20), Lesotho (19), and Guinea (18).
- Sixty-nine health worker infections were reported retrospectively from Uganda (65) and Eswatini (4).
- A total of 99 new COVID-19 related deaths occurred in eight countries: South Africa (67, 68%), Algeria (10), Ethiopia (7), Kenya (4), Angola (4), Mozambique (2), Nigeria (1), Cabo Verde (1), Madagascar (1), Eswatini (1), and Lesotho (1), in the past 24 hours.

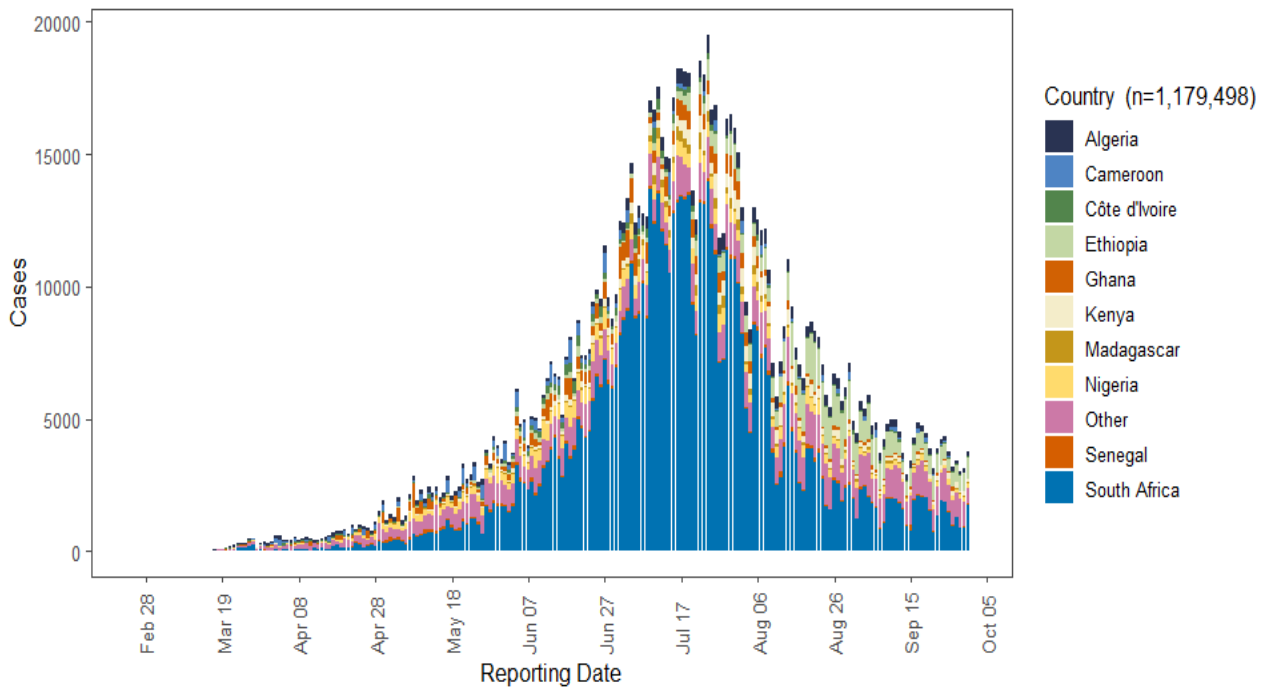
- As of 30 September 2020, a cumulative total of 1 179 498, COVID-19 cases has been reported across the 47 countries in the WHO African Region, including 1 179 497 confirmed cases, with one probable case reported in Democratic Republic of the Congo.
- South Africa has registered about half, 57% (674 339), of all the reported cases in the region. This is followed by Ethiopia (75 368), Nigeria (58 848), Algeria (51 530), and Ghana (46 656), all the top five countries collectively accounting for 77% (906 741) of all reported cases (**Annex 5**).
- Six countries are still reporting fewer than 1 000 cases: Sao Tome and Principe (911), Burundi (510), Comoros (479), Mauritius (381), Eritrea (375), and Seychelles (142).
- A total of 989 277 (84%) case-patients reported from all the 47 countries have recovered to date.
- As of 30 September 2020, a total of 43 583 health workers have been infected in 43 countries: South Africa (27 360), Algeria (2 300), Nigeria (2 175), Ghana (2 065), Ethiopia (1 506), Kenya (970), Cameroon (808), Uganda (520), Guinea (513), Mozambique (473), Namibia (455), Equatorial Guinea (429), Senegal (349), Eswatini (288), Guinea-Bissau (282), Malawi (280), Democratic Republic of the Congo (256), Zimbabwe (238), Sierra Leone (230), Liberia (214), Côte d'Ivoire (187), Niger (184), Congo (166), Gambia (142), Benin (139), Zambia (139), South Sudan (128), Burkina Faso (117), Cabo Verde (90), Sao Tome and Principe (88), Chad (75), Madagascar (70), Togo (68), Gabon (57), Botswana (56), Angola (40), Burundi (35), Comoros (34), Mauritius (30), Lesotho (20), Mauritania (5), Central African Republic (1) and United Republic of Tanzania (1).
- Liberia 16.0% (214/1 343), Niger 15.4% (184/1 197), Guinea Bissau 12.1% (282/2 324), Sierra Leone 10.3% (230/2 231), Sao Tome and Principe 9.7% (88/911), Equatorial Guinea 8.5% (429/5 030) and Mauritius 7.9% (30/381), have the highest country specific proportion of health worker infections among confirmed cases.
- A total of 25 926 deaths has occurred in 45 countries, giving an overall case fatality ratio of 2.2% in the region. South Africa now contributes the highest proportion, 65% (16 734), of the total reported deaths, followed by Algeria with 6.7% (1 736), Ethiopia 4.6% (1 198), Nigeria 4.3% (1 112), Kenya 2.7% (711), Cameroon 1.6% (418), Zambia 1.3% (332), Senegal 1.2% (311), Ghana 1.2% (301), Democratic Republic of the Congo 1.1% (272), and Madagascar 0.9% (230). The top five countries: South Africa, Algeria, Ethiopia, Nigeria, and Kenya account for 83% (21 491) of the total deaths reported in the region.
- For country specific case fatality ratios, the highest rates have been observed in the following countries: Chad (7.1%), Liberia (6.1%), Niger (5.8%), Mali (4.2%), Angola (3.7%), Algeria (3.4%) and Sierra Leone (3.2%).
- Based on available data on age and gender distribution ($n=11\,868$), males (61%) 7 235 in the 31-39 and 40-49 age groups are more affected than females (39%) 4 633 across the same age groups in the African region (**Annex 5**).
- Currently, 39 (83%) countries in the region are experiencing community transmission, five (11%) have clusters of cases and three (6%) have sporadic cases of COVID-19. The region has also observed increased incidences of importation of cases between affected countries in the region.
- The seven African countries in the WHO EMRO Region reported a total of 298 836 confirmed COVID-19 cases: Morocco (121 183), Egypt (103 079), Libya (34 525), Tunisia (17 405), Sudan (13 640), Djibouti (5 416), and Somalia (3 588). Additionally, a total of 9 859 deaths has been recorded from Egypt (5 914), Morocco (2 152), Sudan (836), Libya (551), Tunisia (246), Somalia (99) and Djibouti (61) (**Annex 6**).
- A cumulative total of 1 478 334 confirmed COVID-19 cases, 35 785 deaths (case fatality ratio 2.4%) with 1 222 580 cases that have recovered have been reported in the African continent (**Annex 6**).

Global situation (as of 1 October 2020, 10:53 hours Geneva)

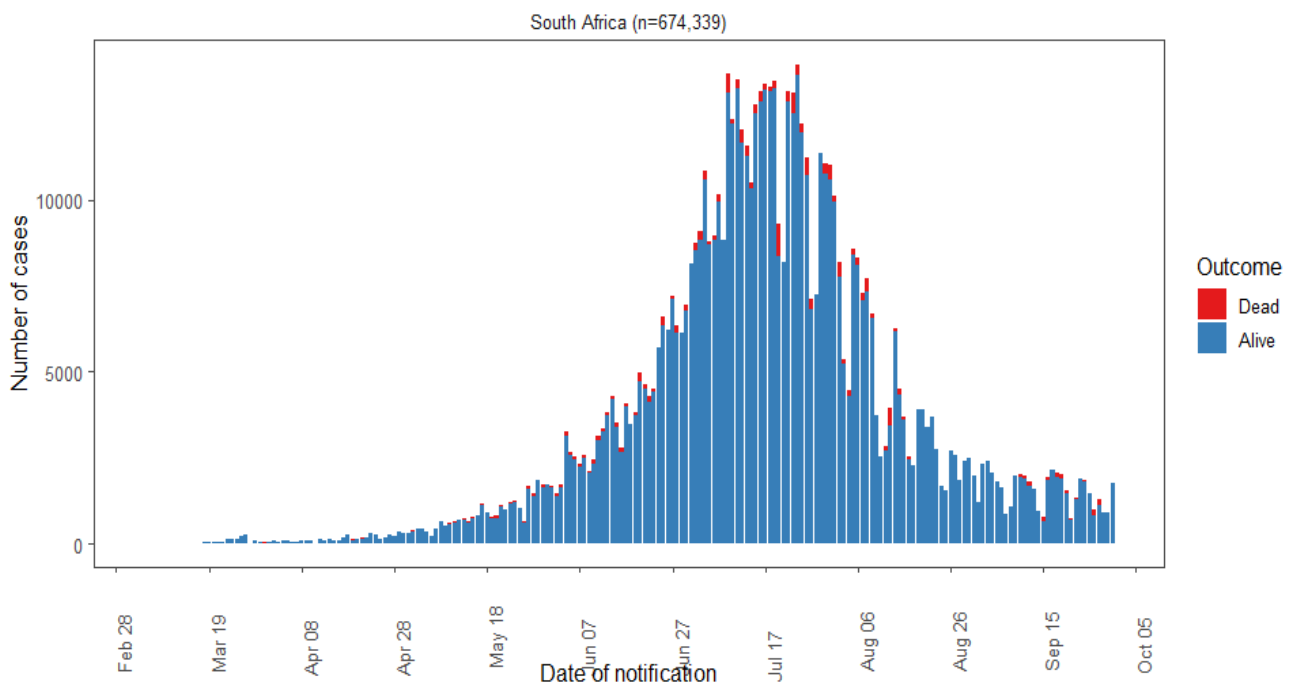
- A total of **271 704** new confirmed COVID-19 cases with **5 682** deaths were reported globally.
- Globally, the cumulative number of reported confirmed cases is **33 722 075**, with **1 009 270** deaths.

ANNEXES

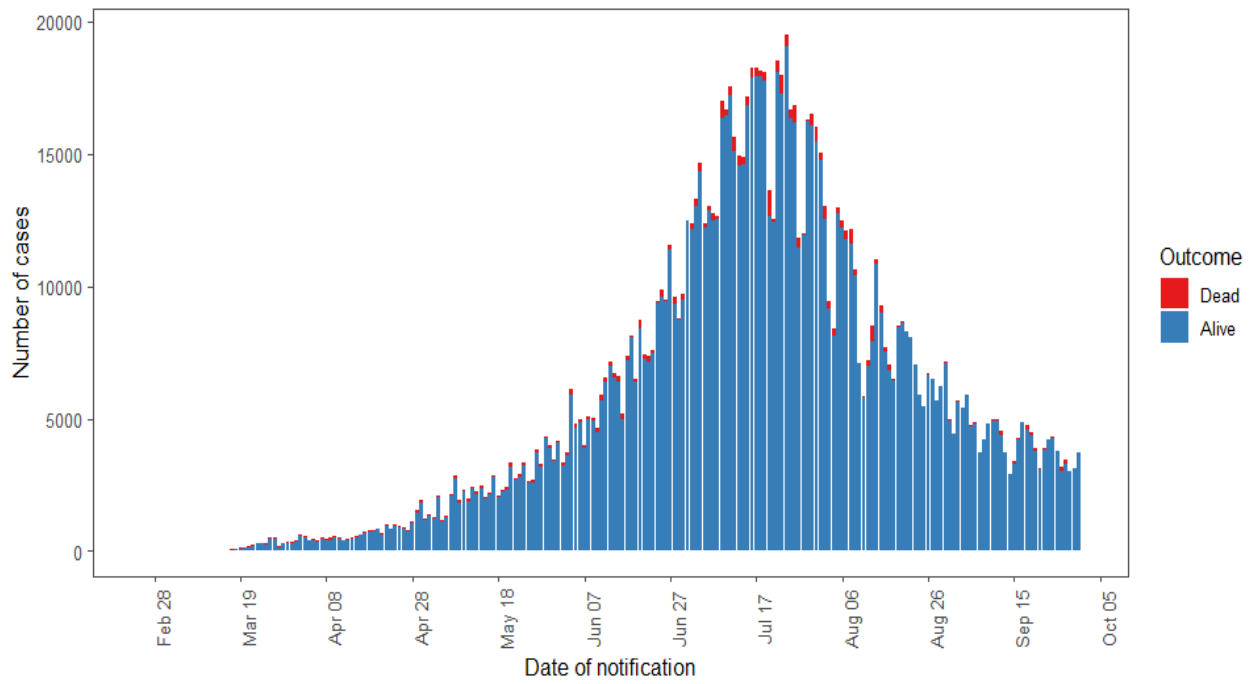
Annex 1: An overall epicurve of confirmed cases of COVID-19 in the WHO African Region by reporting date, 25 February – 30 September 2020 (n= 1 179 498)



Annex 2: The distribution of confirmed COVID-19 cases in South Africa by date of reporting, 5 March – 6 September 2020, 5 March – 30 September 2020 (n=674 339)



Annex 3: The distribution of confirmed COVID-19 cases in the WHO African region by outcome, 25 February – 30 September (n= 1 179 498)

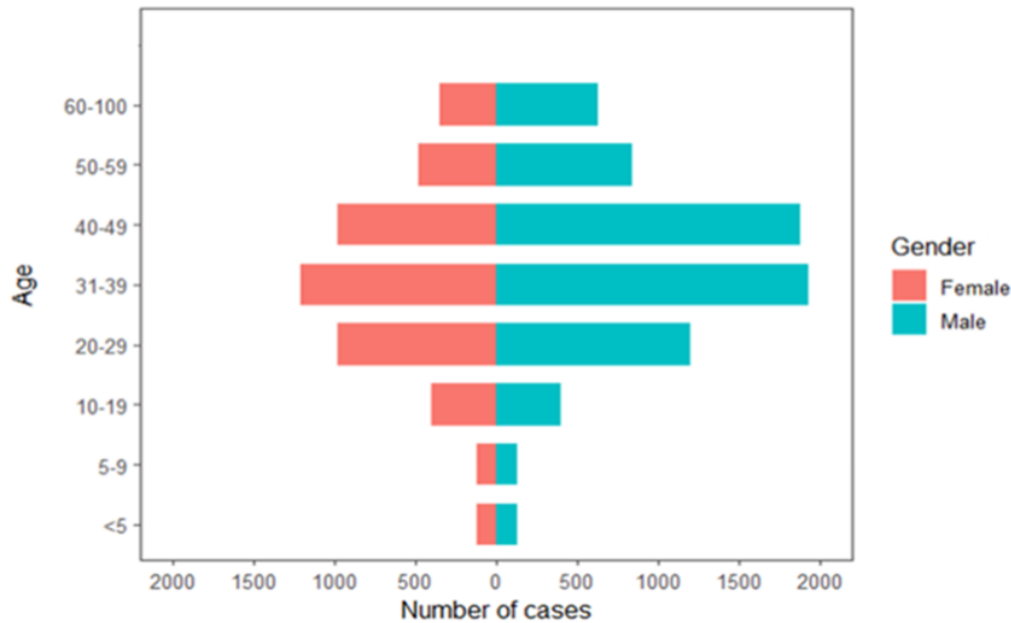


Annex 4: Countries with reported laboratory-confirmed COVID-19 cases and deaths: Data as of 30 September 2020

Country	Total Cases	New Cases	Total Deaths	New Deaths	Recovered Cases	Probable Cases	Case fatality ratio (%)
South Africa	674 339	1 767	16 734	67	608 112	0	2.5
Ethiopia	75 368	784	1 198	7	31 151	0	1.6
Nigeria	58 848	201	1 112	1	50 358	0	1.9
Algeria	51 530	162	1 736	10	36 174	0	3.4
Ghana	46 656	0	301	0	45 942	0	0.6
Kenya	38 529	151	711	4	24 908	0	1.8
Cameroon	20 838	0	418	0	19 519	0	2.0
Côte d'Ivoire	19 724	55	120	0	19 291	0	0.6
Madagascar	16 408	31	230	1	15 301	0	1.4
Senegal	14 982	37	311	0	12 437	0	2.1
Zambia	14 759	44	332	0	13 959	0	2.2
Namibia	11 265	0	121	0	9 014	0	1.1
Democratic Republic of the Congo	10 659	0	272	0	10 139	1	2.6
Guinea	10 652	18	66	0	9 996	0	0.6
Gabon	8 766	14	54	0	8 005	0	0.6
Mozambique	8 728	172	61	2	5 232	0	0.7
Uganda	8 129	0	75	0	4 430	0	0.9
Zimbabwe	7 838	1	228	0	6 303	0	2.9
Mauritania	7 502	14	161	0	7 120	0	2.1
Cabo Verde	6 024	124	60	1	5 277	0	1.0
Malawi	5 773	1	179	0	4 247	0	3.1
Eswatini	5 482	20	109	1	4 912	0	2.0
Congo	5 089	0	89	0	3 995	0	1.7
Equatorial Guinea	5 030	2	83	0	4 769	0	1.7
Angola	4 972	67	183	4	1 941	0	3.7
Rwanda	4 840	4	29	0	3 154	0	0.6
Central African Republic	4 829	0	62	0	1 914	0	1.3
Gambia	3 579	0	112	0	2 161	0	3.1
Botswana	3 172	0	16	0	710	0	0.5
Mali	3 118	17	131	0	2 453	0	4.2
South Sudan	2 704	0	49	0	1 474	0	1.8
Benin	2 357	0	41	0	1 973	0	1.7
Guinea-Bissau	2 324	0	39	0	1 549	0	1.7
Sierra Leone	2 231	9	72	0	1 687	0	3.2
Burkina Faso	2 028	0	57	0	1 279	0	2.8
Togo	1 784	25	48	0	1 348	0	2.7
Lesotho	1 595	19	36	1	873	0	2.3
Liberia	1 343	0	82	0	1 221	0	6.1
Chad	1 200	7	85	0	1 007	0	7.1
Niger	1 197	1	69	0	1 114	0	5.8
Sao Tome and Principe	911	0	15	0	886	0	1.6
Burundi	510	2	1	0	473	0	0.2
United Republic of Tanzania	509	0	21	0	180	0	4.1
Comoros	479	0	7	0	464	0	1.5
Mauritius	381	0	10	0	344	0	2.6
Eritrea	375	0	0	0	341	0	0.0
Seychelles	142	0	0	0	140	0	0.0
Total (N=47)	1 179 498	3 749	25 926	99	989 277	1	2.2

NOTE: The WHO AFRO COVID-19 Daily Update presents official data communicated by the national authorities in Member States. The data has been captured up to 23:59 hours of the previous day. Data/information received after 00:00 hours will be reflected in the subsequent update.

Annex 5: The distribution of confirmed COVID-19 cases by gender and age group: Data as of 25 February – 30 September 2020 (n= 11 868)



Annex 6: The distribution of COVID-19 attack rate in the African region, 25 February – 30 September 2020

Country	Cumulative cases	Cumulative deaths	Cumulative recovered	Case fatality ratio (%)
Morocco	121 183	2 152	100 253	1.8
Egypt	103 079	5 914	96 094	5.7
Libya	34 525	551	19 361	1.6
Tunisia	17 405	246	2 541	1.4
Sudan	13 640	836	6 764	6.1
Djibouti	5 416	61	5 344	1.1
Somalia	3 588	99	2 946	2.8
Total (n=7)	298 836	9 859	233 303	3.3
Situation in the African Continent				
African Region	1 179 498	25 926	989 277	2.2
Eastern Mediterranean Region	298 836	9 859	233 303	3.3
Overall Total (N=54)	1 478 334	35 785	1 222 580	2.4

© WHO Regional Office for Africa

This is not an official publication of the World Health Organization.

Correspondence on this publication may be directed to:

Dr Benido Impouma

Programme Area Manager, Health Information & Risk Assessment

WHO Emergency Preparedness and Response

WHO Regional Office for Africa

P O Box. 06 Cité du Djoué, Brazzaville, Congo

Email: afrooutbreak@who.int

Requests for permission to reproduce or translate this publication – whether for sale or for non-commercial distribution – should be sent to the same address.

The designations employed and the presentation of the material in this publication do not imply the expression of any opinion whatsoever on the part of the World Health Organization concerning the legal status of any country, territory, city or area or of its authorities, or concerning the delimitation of its frontiers or boundaries. Dotted lines on maps represent approximate borderlines for which there may not yet be full agreement.

All reasonable precautions have been taken by the World Health Organization to verify the information contained in this publication. However, the published material is being distributed without warranty of any kind, either express or implied. The responsibility for the interpretation and use of the material lies with the reader. In no event shall the World Health Organization or its Regional Office for Africa be liable for damages arising from its use.