

Coronavirus (COVID-19) Update

COVID-19 Daily Situation Update, WHO Regional Office for Africa

Epidemiological Week No. 40 | 3 October 2020

KEY HIGHLIGHTS

- In the past 24 hours (00:00, 1 October 2020 to 00:00, 2 October 2020), a total of **3 674** new confirmed COVID-19 cases were reported from **23** countries compared to **4 002** cases reported from 31 countries the previous day (1 October 2020). South Africa reported the highest daily number of new cases, at 1 749 (48%), followed by Ethiopia with 890 (24%), Kenya (210), Algeria (157), Nigeria (126), Angola (97), Mozambique (91), Cabo Verde (79), Madagascar (39) and Côte d'Ivoire (38).
 - **Thirty-eight** health worker infections were reported retrospectively from Uganda (32), Burkina Faso (5) and Mozambique (1).
 - Although **United Republic of Tanzania** has no new confirmed cases in our database in the last **145** days, there is no official report indicating zero confirmed cases.
 - **Sixty-eight** new COVID-19 related deaths occurred in **seven** countries: South Africa (**43, 63%**), Algeria (**8**), Kenya (**7**), Angola (**4**), Ethiopia (**3**), Mozambique (**2**) and Cabo Verde (**1**) in the past 24 hours.
 - The cumulative number of reported COVID-19 cases in the WHO African Region is **1 187 689**, including **1 187 688** confirmed and **one** probable case. South Africa accounts for **57%** (677 833) of all reported confirmed cases in the region.
 - A total of **43 638** (3.7%) health workers from **43** countries has been infected, with South Africa having **63%** (27 360/43 638) of all the reported cases. Liberia **16.0%** (214/1 343), Niger **15.4%** (184/1 197) and Guinea-Bissau **12.0%** (282/2 362), have the highest country specific proportion of health worker infections among confirmed cases.
 - The cumulative total of COVID-19 related deaths is **26 166**, reported from **45** countries, giving an overall case fatality ratio of **2.2%** in the region. South Africa **65%** (16 909/ 26 166), Algeria **6.7%** (1 749/ 26 166) and Ethiopia **4.6%** (1 207/ 26 166) have the highest proportion of all reported deaths. Chad (7.0%)*, Liberia (6.1%)*, Niger (5.8%), Mali (4.2%), Angola (3.6%), Algeria (3.4%) and Sierra Leone (3.2%) have the highest country specific case fatality ratios.
 - As of 2 October 2020, a total of **996 103** (84%) case-patients from all the 47 countries have recovered from the disease.
 - A cumulative total of **1 497 821** confirmed COVID-19 cases with **36 222** deaths have been reported in the African continent.
- *Chad and Liberia are implementing community mortality surveillance that could be contributing to high case fatality ratios.*

EPIDEMIOLOGICAL UPDATE

WHO African Regional situation (as of 2 October 2020, 00:00 hours Brazzaville)

- The COVID-19 outbreak in the WHO African Region is gradually slowing down in the past couple of weeks, as shown in Annexes 1, 2 and 3.
- Although the first case of COVID-19 didn't emerge until late in March in Sierra Leone, by late April, immunization rates and the use of child health care services had declined by a worrying 19%. COVID-19 has imposed challenges to maintaining immunization and child health care services. The WHO Sierra Leone country office has escalated its technical assistance, with all immunization staff deployed to the field to help integrate immunization activities into the COVID-19 response, particularly at health facilities. <https://www.afro.who.int/news/sierra-leone-reversing-immunization-decline-wake-covid-19>.
- In the last 24 hours, a total of 3 674 new confirmed COVID-19 cases were reported from 23 countries (**Annex 3**) compared to 4 002 cases reported from 31 countries the previous day. South Africa reported the highest number of new cases, at 48% (1 749) of the new cases. Other countries that have reported high numbers of cases in the last 24 hours include Ethiopia with 890 (24%), Kenya (210), Algeria (157), Nigeria (126), Angola (97), Mozambique (91), Cabo Verde (79), Madagascar (39), Côte d'Ivoire (38), Guinea (35), Gabon (31), Zambia (28) and Mali (25).
- Thirty-eight health worker infections were reported retrospectively from Uganda (32), Burkina Faso (5) and Mozambique (1).

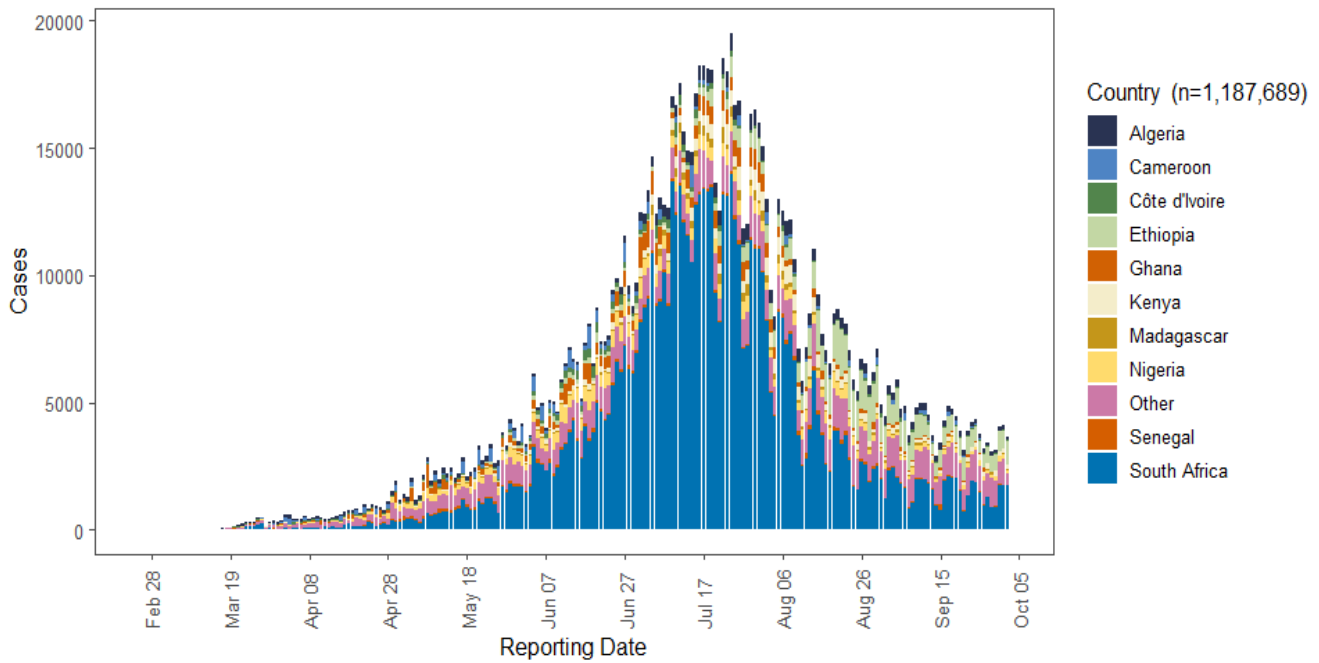
- Sixty-eight new COVID-19 related deaths occurred in seven countries: South Africa (43, 63%), Algeria (8), Kenya (7), Angola (4), Ethiopia (3), Mozambique (2) and Cabo Verde (1) in the past 24 hours.
- As of 2 October 2020, a cumulative total of 1 187 689, COVID-19 cases has been reported across the 47 countries in the WHO African Region, including 1 187 688 confirmed cases, with one probable case reported in Democratic Republic of the Congo.
- South Africa has registered about half, 57% (677 833), of all the reported cases in the region. This is followed by Ethiopia (76 988), Nigeria (59 127), Algeria (51 847), and Ghana (46 656), these five countries collectively accounting for 77% (912 451) of all reported cases (**Annex 5**).
- Six countries are still reporting fewer than 1 000 cases: Sao Tome and Principe (911), Burundi (513), Comoros (479), Mauritius (381), Eritrea (381), and Seychelles (142).
- A total of 996 103 (84%) case-patients reported from all the 47 countries have recovered to date.
- As of 2 October 2020, a total of 43 638 health workers have been infected in 43 countries: South Africa (27 360), Algeria (2 300), Nigeria (2 175), Ghana (2 065), Ethiopia (1 506), Kenya (970), Cameroon (808), Uganda (560), Guinea (513), Mozambique (482), Namibia (456), Equatorial Guinea (429), Senegal (349), Eswatini (288), Guinea-Bissau (282), Malawi (280), Democratic Republic of the Congo (256), Zimbabwe (238), Sierra Leone (230), Liberia (214), Côte d'Ivoire (187), Niger (184), Congo (166), Gambia (142), Benin (139), Zambia (139), South Sudan (128), Burkina Faso (122), Cabo Verde (90), Sao Tome and Principe (88), Chad (75), Madagascar (70), Togo (68), Gabon (57), Botswana (56), Angola (40), Burundi (35), Comoros (34), Mauritius (30), Lesotho (20), Mauritania (5), Central African Republic (1) and United Republic of Tanzania (1).
- Liberia 16.0% (214/1 343), Niger 15.4% (184/1 197), Guinea Bissau 12.0% (282/2 362), Sierra Leone 10.2% (230/2 252), Sao Tome and Principe 9.7% (88/911), Equatorial Guinea 8.5% (429/5 045) and Mauritius 7.9% (30/381), have the highest country specific proportion of health worker infections among confirmed cases.
- A total of 26 166 deaths has occurred in 45 countries, giving an overall case fatality ratio of 2.2% in the region. South Africa now contributes the highest proportion, 65% (16 909), of the total reported deaths, followed by Algeria with 6.7% (1 749), Ethiopia 4.6% (1 207), Nigeria 4.3% (1 112), Kenya 2.8% (725), Cameroon 1.6% (418), Zambia 1.3% (333), Senegal 1.2% (311), Ghana 1.2% (301), Democratic Republic of the Congo 1.0% (272), and Madagascar 0.9% (232). The top five countries: South Africa, Algeria, Ethiopia, Nigeria, and Kenya account for 83% (21 702) of the total deaths reported in the region.
- For country specific case fatality ratios, the highest rates have been observed in the following countries: Chad (7.0%), Liberia (6.1%), Niger (5.8%), Mali (4.2%), Angola (3.6%), Algeria (3.4%) and Sierra Leone (3.2%).
- Based on available data on age and gender distribution ($n=11\,868$), males (61%) 7 235 in the 31-39 and 40-49 age groups are more affected than females (39%) 4 633 across the same age groups in the African region (**Annex 5**).
- Currently, 39 (83%) countries in the region are experiencing community transmission, five (11%) have clusters of cases and three (6%) have sporadic cases of COVID-19. The region has also observed increased incidences of importation of cases between affected countries in the region.
- The seven African countries in the WHO EMRO Region reported a total of 310 132 confirmed COVID-19 cases: Morocco (128 565), Egypt (103 466), Libya (35 717), Tunisia (19 721), Sudan (13 653), Djibouti (5 417), and Somalia (3 593). Additionally, a total of 10 056 deaths has been recorded from Egypt (5 956), Morocco (2 263), Sudan (836), Libya (570), Tunisia (271), Somalia (99) and Djibouti (61) (**Annex 6**).
- A cumulative total of 1 497 821 confirmed COVID-19 cases, 36 222 deaths (case fatality ratio 2.4%) with 1 237 276 cases that have recovered have been reported in the African continent (**Annex 6**).

Global situation (as of 3 October 2020, 10:53 hours Geneva)

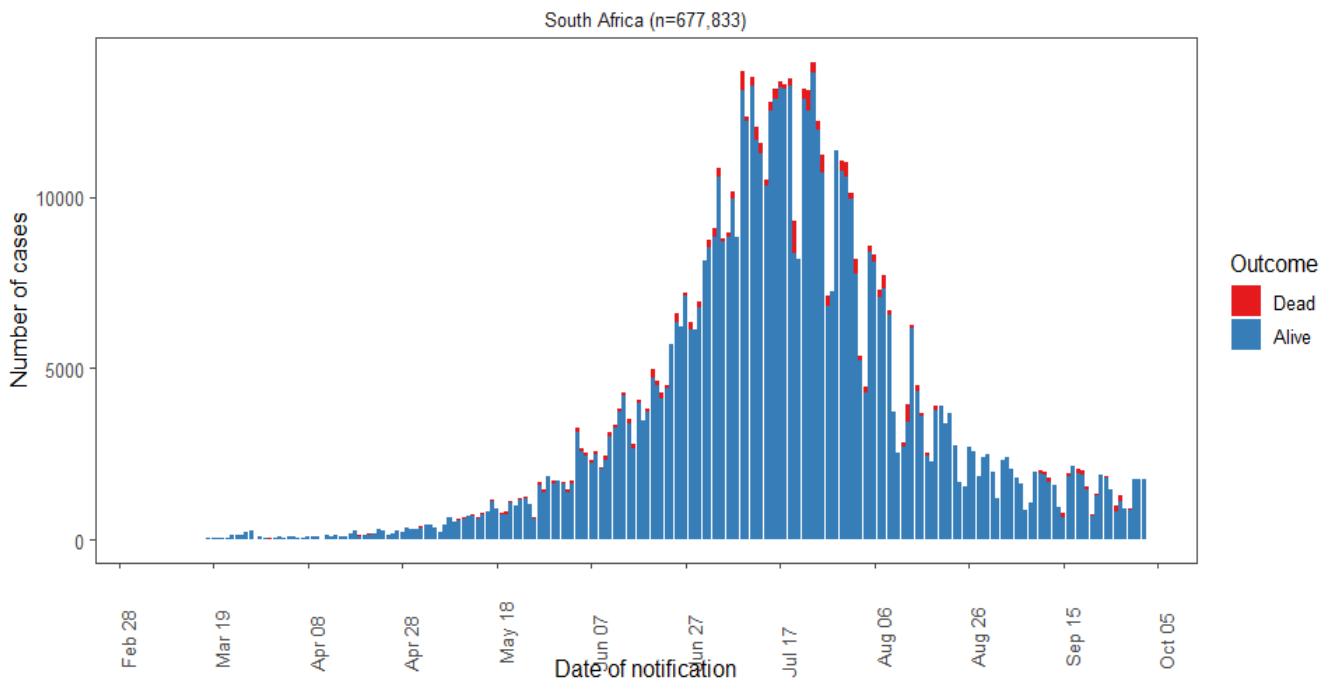
- A total of **312 868** new confirmed COVID-19 cases with **8 707** deaths were reported globally.
- Globally, the cumulative number of reported confirmed cases is **34 396 222**, with **1 024 675** deaths.

ANNEXES

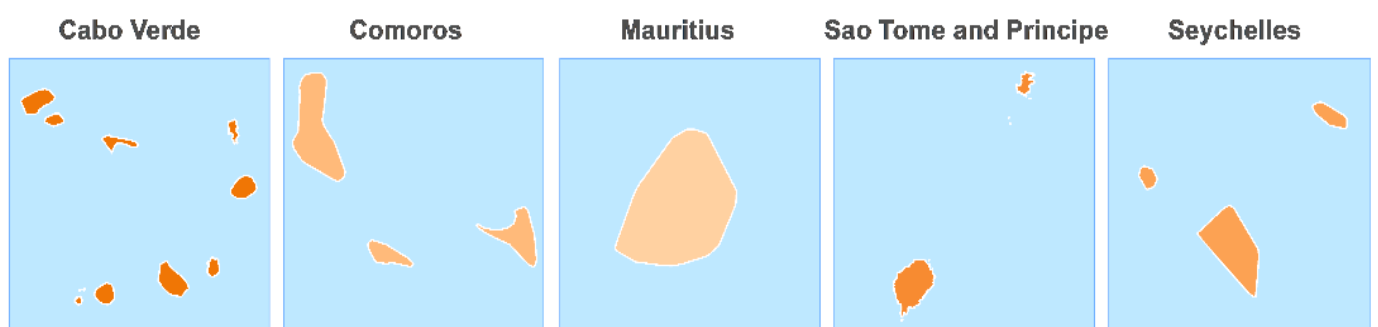
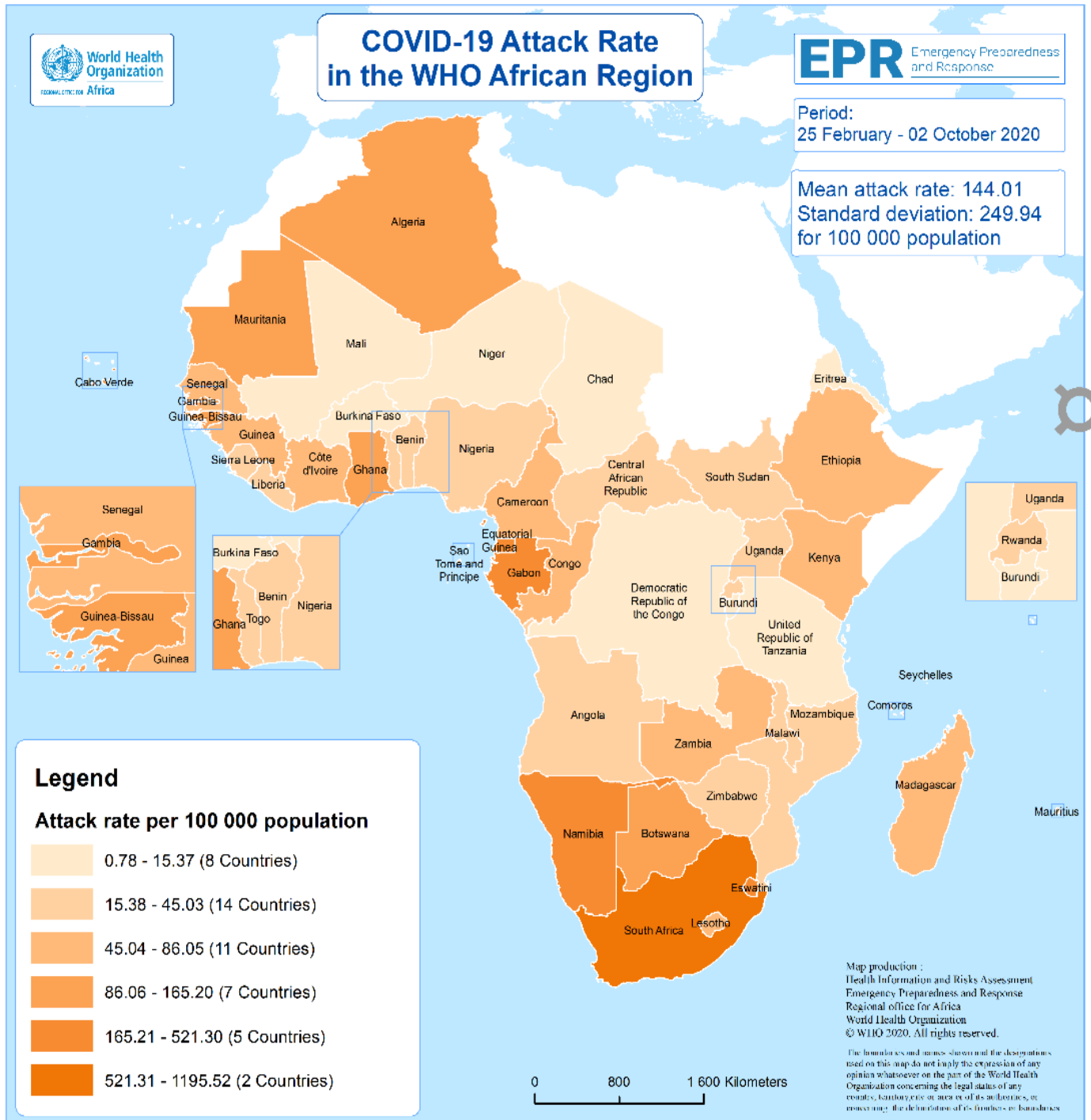
Annex 1: An overall epicurve of confirmed cases of COVID-19 in the WHO African Region by reporting date, 25 February – 2 October 2020 (n= 1 187 689)



Annex 2: The distribution of confirmed COVID-19 cases in South Africa by date of reporting, 5 March – 2 October 2020 (n=677 833)



Annex 3: The distribution of confirmed COVID-19 cases in the WHO African region by week of reporting, 25 February – 2 October (n= 1 187 689)

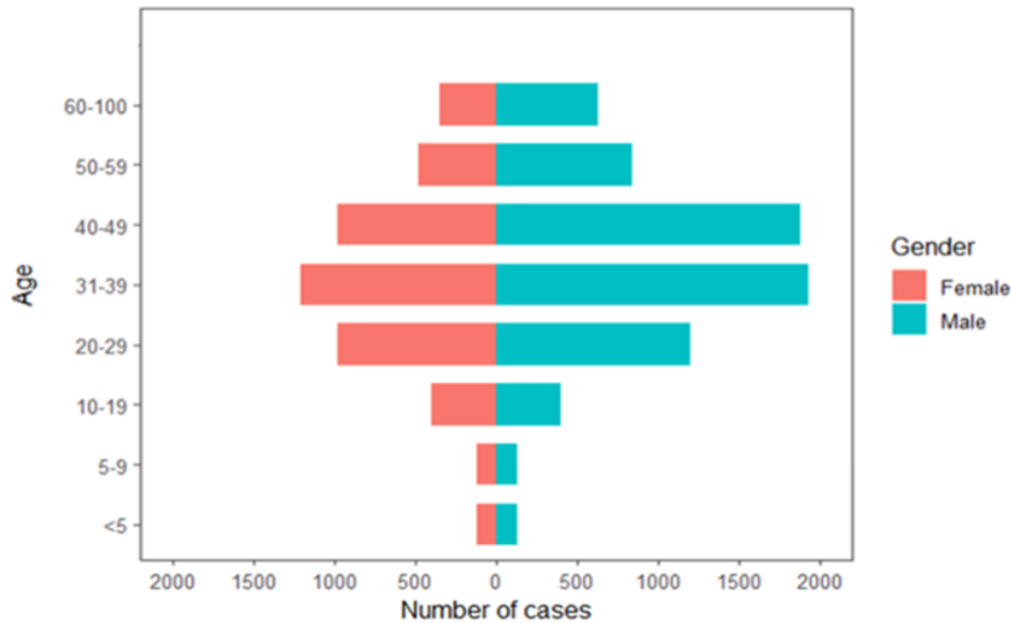


Annex 4: Countries with reported laboratory-confirmed COVID-19 cases and deaths: Data as of 2 October 2020

Country	Total Cases	New Cases	Total Deaths	New Deaths	Recovered Cases	Probable Cases	Case fatality ratio (%)
South Africa	677 833	1 749	16 909	43	611 044	0	2.5
Ethiopia	76 988	890	1 207	3	31 624	0	1.6
Nigeria	59 127	126	1 112	0	50 593	0	1.9
Algeria	51 847	157	1 749	8	36 385	0	3.4
Ghana	46 656	0	301	0	45 942	0	0.6
Kenya	38 923	210	725	7	25 114	0	1.9
Cameroon	20 838	0	418	0	19 519	0	2.0
Côte d'Ivoire	19 793	38	120	0	19 357	0	0.6
Madagascar	16 493	39	232	0	15 467	0	1.4
Senegal	15 019	0	311	0	12 538	0	2.1
Zambia	14 830	28	333	0	13 980	0	2.2
Namibia	11 480	0	123	0	9 351	0	1.1
Guinea	10 735	35	66	0	10 066	0	0.6
Democratic Republic of the Congo	10 729	0	272	0	10 183	1	2.5
Mozambique	8 979	91	64	2	5 595	0	0.7
Gabon	8 797	31	54	0	8 067	0	0.6
Uganda	8 491	0	79	0	4 546	0	0.9
Zimbabwe	7 858	8	228	0	6 322	0	2.9
Mauritania	7 511	6	161	0	7 163	0	2.1
Cabo Verde	6 205	79	62	1	5 399	0	1.0
Malawi	5 783	4	179	0	4 535	0	3.1
Eswatini	5 521	21	111	0	5 061	0	2.0
Angola	5 211	97	189	4	2 215	0	3.6
Congo	5 089	0	89	0	3 995	0	1.7
Equatorial Guinea	5 045	0	83	0	4 879	0	1.6
Rwanda	4 847	4	29	0	3 197	0	0.6
Central African Republic	4 845	0	62	0	1 915	0	1.3
Gambia	3 590	5	115	0	2 226	0	3.2
Botswana	3 172	0	16	0	710	0	0.5
Mali	3 156	25	131	0	2 467	0	4.2
South Sudan	2 715	0	50	0	1 474	0	1.8
Guinea-Bissau	2 362	0	39	0	1 638	0	1.7
Benin	2 357	0	41	0	1 973	0	1.7
Sierra Leone	2 252	14	72	0	1 697	0	3.2
Burkina Faso	2 088	0	58	0	1 363	0	2.8
Togo	1 818	9	48	0	1 365	0	2.6
Lesotho	1 639	0	38	0	874	0	2.3
Liberia	1 343	0	82	0	1 221	0	6.1
Chad	1 211	8	85	0	1 070	0	7.0
Niger	1 197	0	69	0	1 114	0	5.8
Sao Tome and Principe	911	0	15	0	886	0	1.6
Burundi	513	0	1	0	486	0	0.2
United Republic of Tanzania	509	0	21	0	180	0	4.1
Comoros	479	0	7	0	464	0	1.5
Mauritius	381	0	10	0	348	0	2.6
Eritrea	381	0	0	0	353	0	0.0
Seychelles	142	0	0	0	142	0	0.0
Total (N=47)	1 187 689	3 674	26 166	68	996 103	1	2.2

NOTE: The WHO AFRO COVID-19 Daily Update presents official data communicated by the national authorities in Member States. The data has been captured up to 23:59 hours of the previous day. Data/information received after 00:00 hours will be reflected in the subsequent update.

Annex 5: The distribution of confirmed COVID-19 cases by gender and age group: Data as of 25 February – 2 October 2020 (n= 11 868)



Annex 6: The distribution of COVID-19 attack rate in the African region, 25 February – 2 October 2020

Country	Cumulative cases	Cumulative deaths	Cumulative recovered	Case fatality ratio (%)
Morocco	128 565	2 263	106 044	1.8
Egypt	103 466	5 956	97 143	5.8
Libya	35 717	570	20 334	1.6
Tunisia	19 721	271	2 541	1.4
Sudan	13 653	836	6 764	6.1
Djibouti	5 417	61	5 346	1.1
Somalia	3 593	99	3 001	2.8
Total (n=7)	310 132	10 056	241 173	3.2
Situation in the African Continent				
African Region	1187 689	26 166	996 103	2.2
Eastern Mediterranean Region	310 132	10 056	241 173	3.2
Overall Total (N=54)	1 497 821	36 222	1 237 276	2.4

© WHO Regional Office for Africa

This is not an official publication of the World Health Organization.

Correspondence on this publication may be directed to:

Dr Benido Impouma

Programme Area Manager, Health Information & Risk Assessment

WHO Emergency Preparedness and Response

WHO Regional Office for Africa

P O Box. 06 Cité du Djoué, Brazzaville, Congo

Email: afrooutbreak@who.int

Requests for permission to reproduce or translate this publication – whether for sale or for non-commercial distribution – should be sent to the same address.

The designations employed and the presentation of the material in this publication do not imply the expression of any opinion whatsoever on the part of the World Health Organization concerning the legal status of any country, territory, city or area or of its authorities, or concerning the delimitation of its frontiers or boundaries. Dotted lines on maps represent approximate borderlines for which there may not yet be full agreement.

All reasonable precautions have been taken by the World Health Organization to verify the information contained in this publication. However, the published material is being distributed without warranty of any kind, either express or implied. The responsibility for the interpretation and use of the material lies with the reader. In no event shall the World Health Organization or its Regional Office for Africa be liable for damages arising from its use.