

Coronavirus (COVID-19) Update

COVID-19 Daily Situation Update, WHO Regional Office for Africa

Epidemiological Week No. 41 | 5 October 2020

KEY HIGHLIGHTS

- In the past 24 hours (00:00, 3 October 2020 to 00:00, 4 October 2020), a total of **3 589** new confirmed COVID-19 cases were reported from **22** countries compared to **3 948** cases reported from 31 countries the previous day (3 October 2020). South Africa reported the highest daily number of new cases, at 1 573 (44%), followed by Ethiopia with 959 (27%), Kenya (243), Mozambique (147), Algeria (141), Zambia (79), Cabo Verde (64), Nigeria (58), Eswatini (39), Madagascar (33) and Senegal (26).
- **Two** health worker infections were reported retrospectively from Namibia (1), and Uganda (1).
- Although **United Republic of Tanzania** has no new confirmed cases in our database in the last **147** days, there is no official report indicating zero confirmed cases.
- **Sixty-one** new COVID-19 related deaths occurred in **eight** countries: South Africa (**38, 63%**), Ethiopia (**8**) Algeria (**4**), Cabo Verde (**3**), Kenya (**3**), Mozambique (**3**), Uganda (**2**) and Chad (**1**) in the past 24 hours.
- The cumulative number of reported COVID-19 cases in the WHO African Region is **1 195 976**, including **1 195 975** confirmed and **one** probable case. South Africa accounts for **57%** (681 289) of all reported confirmed cases in the region.
- A total of **43 585** (3.6%) health workers from **43** countries has been infected, with South Africa having **63%** (27 360/43 585) of all the reported cases. Liberia **16.0%** (214/1 348), Niger **15.3%** (184/1 200) and Guinea-Bissau **12.0%** (282/2 362), have the highest country specific proportion of health worker infections among confirmed cases.
- The cumulative total of COVID-19 related deaths is **26 276**, reported from **45** countries, giving an overall case fatality ratio of **2.2%** in the region. South Africa **65%** (16 976/ 26 276), Algeria **6.7%** (1 760/ 26 276) and Ethiopia **4.7%** (1 222/ 26 276) have the highest proportion of all reported deaths. Chad (7.1%)*, Liberia (6.1%)*, Niger (5.8%), Mali (4.1%), Angola (3.4%), Algeria (3.4%) and Sierra Leone (3.2%) have the highest country specific case fatality ratios.
- As of 4 October 2020, a total of **1 006 344** (84%) case-patients from all the 47 countries have recovered from the disease.
- A cumulative total of **1 516 010** confirmed COVID-19 cases with **36 496** deaths have been reported in the African continent.
*Chad and Liberia are implementing community mortality surveillance that could be contributing to high case fatality ratios.

EPIDEMIOLOGICAL UPDATE

WHO African Regional situation (as of 4 October 2020, 00:00 hours Brazzaville)

- The COVID-19 outbreak in the WHO African Region is gradually slowing down in the past couple of weeks, as shown in Annexes 1, 2 and 3.
- In the last 24 hours, a total of 3 589 new confirmed COVID-19 cases were reported from 22 countries (**Annex 3**) compared to 3 948 cases reported from 31 countries the previous day. South Africa reported the highest number of new cases, at 44% (1 573) of the new cases. Other countries that have reported high numbers of cases in the last 24 hours include Ethiopia with 959 (27%), Kenya (243), Mozambique (147), Uganda (146), Algeria (141), Zambia (79), Cabo Verde (64), Nigeria (58), Eswatini (39), Madagascar (33), Senegal (26), Mali (14) and Rwanda (14).
- Two health worker infections were reported retrospectively from Namibia (1), and Uganda (1).
- Sixty-one new COVID-19 related deaths occurred in eight countries: South Africa (38, 63%), Ethiopia (8) Algeria (4), Cabo Verde (3), Kenya (3), Mozambique (3), Uganda (2) and Chad (1) in the past 24 hours.
- As of 4 October 2020, a cumulative total of 1 195 976 COVID-19 cases has been reported across the 47 countries in the WHO African Region, including 1 195 975 confirmed cases, with one probable case reported in Democratic Republic of the Congo.

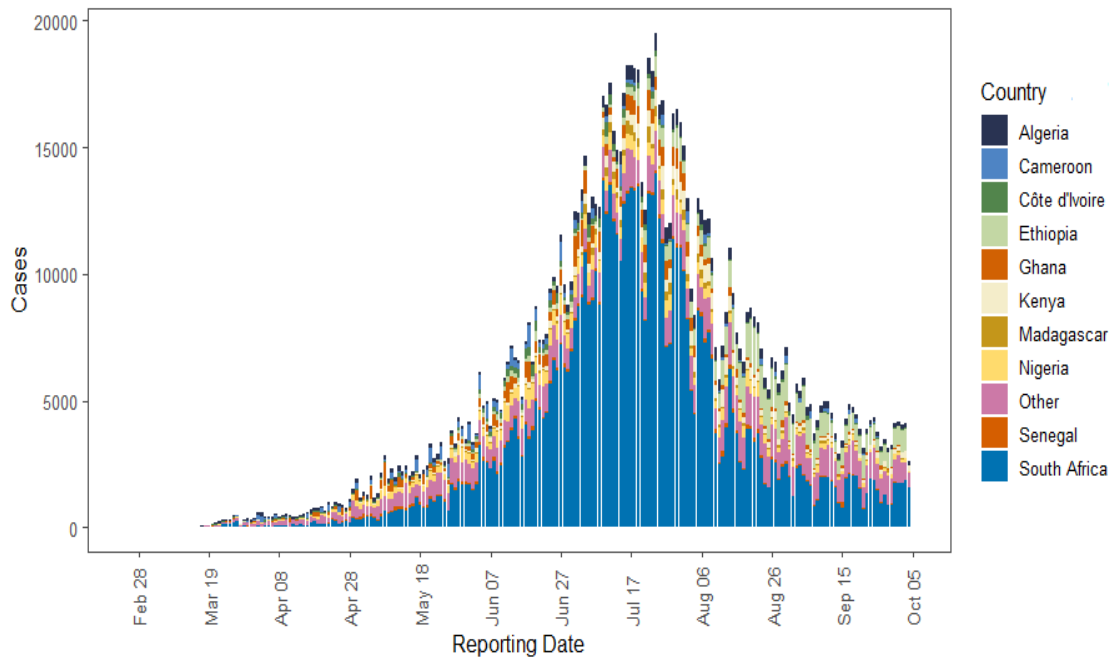
- South Africa has registered about half, 57% (681 289), of all the reported cases in the region. This is followed by Ethiopia (78 819), Nigeria (59 345), Algeria (52 136), and Ghana (46 829), these five countries collectively accounting for 77% (914 754) of all reported cases (**Annex 5**).
- Six countries are still reporting fewer than 1 000 cases: Sao Tome and Principe (913), Burundi (514), Comoros (487), Mauritius (385), Eritrea (398), and Seychelles (142).
- A total of 1 006 344 (84%) case-patients reported from all the 47 countries have recovered to date.
- As of 4 October 2020, a total of 43 585 health workers have been infected in 43 countries: South Africa (27 360), Algeria (2 300), Nigeria (2 175), Ghana (2 065), Ethiopia (1 506), Kenya (970), Cameroon (808), Uganda (561), Guinea (513), Mozambique (484), Namibia (461), Equatorial Guinea (363), Senegal (349), Eswatini (291), Guinea-Bissau (282), Malawi (280), Democratic Republic of the Congo (256), Zimbabwe (238), Sierra Leone (230), Liberia (214), Côte d'Ivoire (187), Niger (184), Congo (166), Gambia (142), Benin (139), Zambia (139), South Sudan (130), Burkina Faso (122), Cabo Verde (90), Sao Tome and Principe (88), Chad (75), Madagascar (70), Togo (68), Gabon (57), Botswana (56), Angola (40), Burundi (35), Comoros (34), Mauritius (30), Lesotho (20), Mauritania (5), Central African Republic (1) and United Republic of Tanzania (1).
- Liberia 16.0% (214/1 348), Niger 15.3% (184/1 200), Guinea Bissau 12.0% (282/2 362), Sierra Leone 10.1% (230/2 269), Sao Tome and Principe 9.6% (88/913) and Mauritius 7.8% (30/385), have the highest country specific proportion of health worker infections among confirmed cases.
- A total of 26 276 deaths has occurred in 45 countries, giving an overall case fatality ratio of 2.2% in the region. South Africa now contributes the highest proportion, 65% (16 976), of the total reported deaths, followed by Algeria with 6.7% (1 760), Ethiopia 4.7% (1 222), Nigeria 4.2% (1 113), Kenya 2.8% (731), Cameroon 1.6% (418), Zambia 1.3% (333), Senegal 1.2% (312), Ghana 1.2% (303), Democratic Republic of the Congo 1.0% (274), and Madagascar 0.9% (232). The top five countries: South Africa, Algeria, Ethiopia, Nigeria, and Kenya account for 83% (21 802) of the total deaths reported in the region.
- For country specific case fatality ratios, the highest rates have been observed in the following countries: Chad (7.1%), Liberia (6.1%), Niger (5.8%), Mali (4.1%), Angola (3.4%), Algeria (3.4%) and Sierra Leone (3.2%).
- Based on available data on age and gender distribution ($n=11\,868$), males (61%) 7 235 in the 31-39 and 40-49 age groups are more affected than females (39%) 4 633 across the same age groups in the African region (**Annex 5**).
- Currently, 39 (83%) countries in the region are experiencing community transmission, five (11%) have clusters of cases and three (6%) have sporadic cases of COVID-19. The region has also observed increased incidences of importation of cases between affected countries in the region.
- The seven African countries in the WHO EMRO Region reported a total of 320 034 confirmed COVID-19 cases: Morocco (133 272), Egypt (103 683), Libya (36 809), Tunisia (23 453), Sudan (13 653), Djibouti (5 419), and Somalia (3 745). Additionally, a total of 10 220 deaths has been recorded from Egypt (5 981), Morocco (2 330), Sudan (836), Libya (592), Tunisia (321), Somalia (99) and Djibouti (61) (**Annex 6**).
- A cumulative total of 1 516 010 confirmed COVID-19 cases, 36 496 deaths (case fatality ratio 2.4%) with 1 253 828 cases that have recovered have been reported in the African continent (**Annex 6**).

Global situation (as of 5 October 2020, 10:53 hours Geneva)

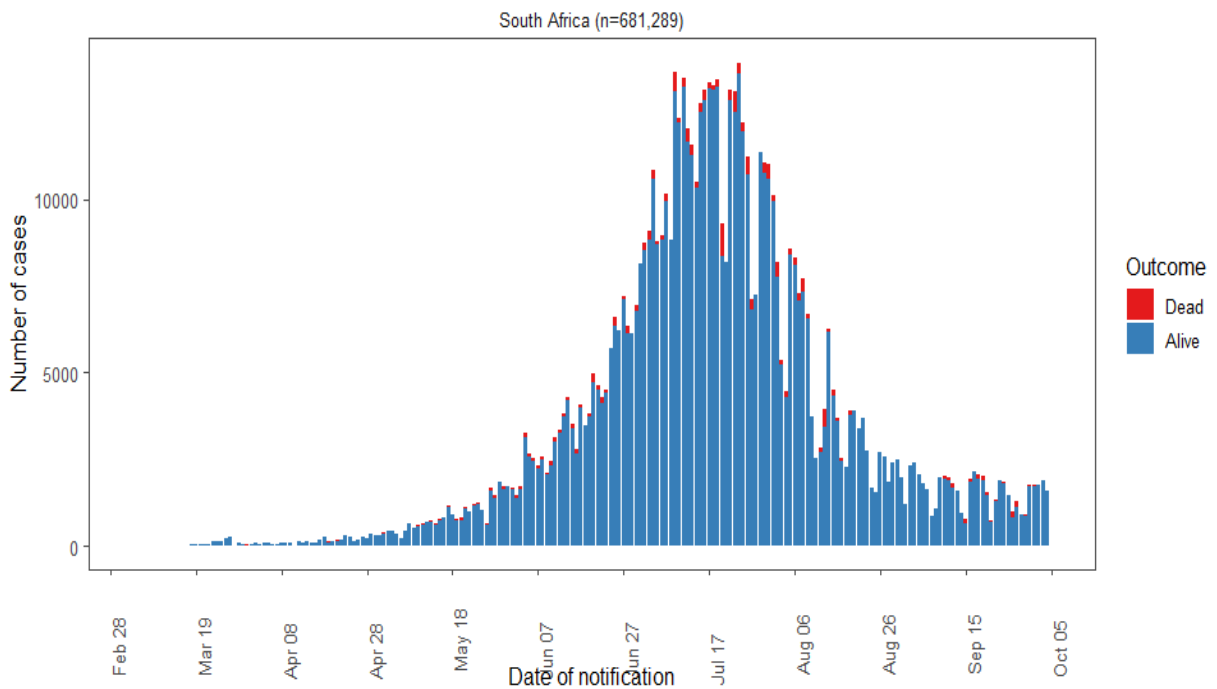
- A total of **295 127** new confirmed COVID-19 cases with **4 628** deaths were reported globally.
- Globally, the cumulative number of reported confirmed cases is **35 027 546**, with **1 034 837** deaths.

ANNEXES

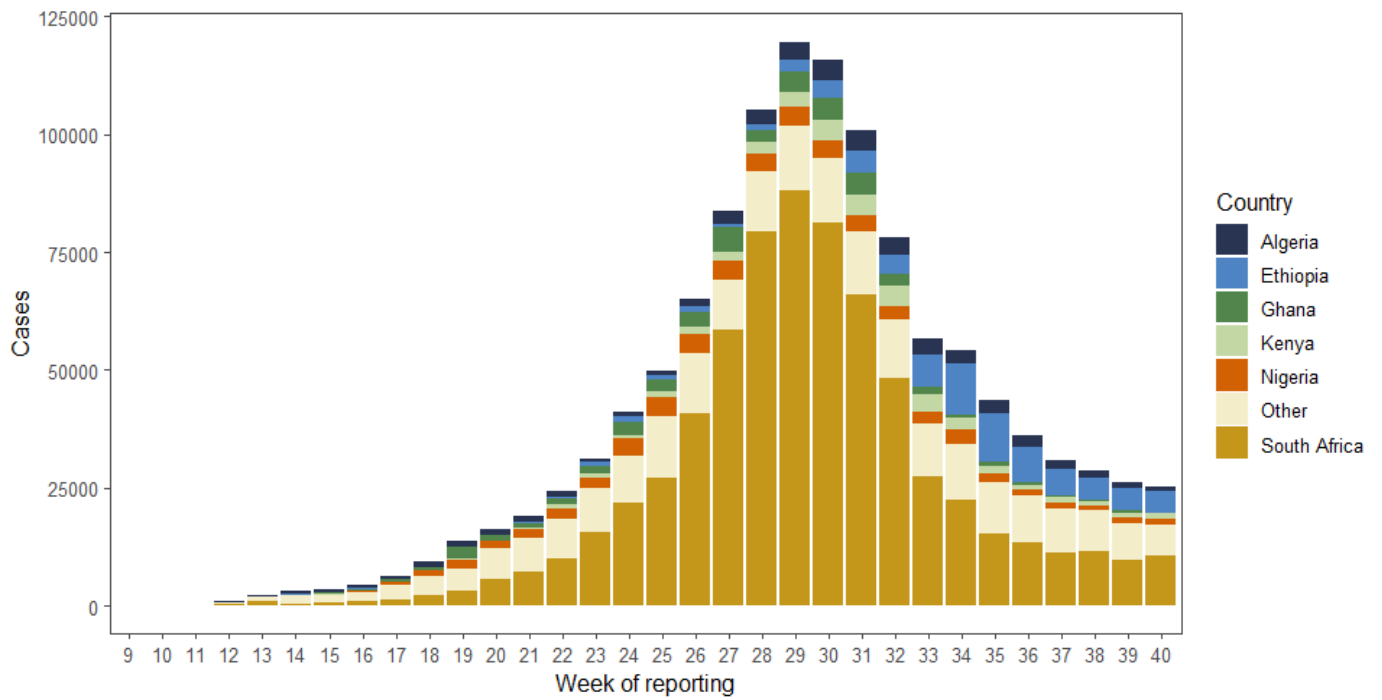
Annex 1: An overall epicurve of confirmed cases of COVID-19 in the WHO African Region by reporting date, 25 February – 4 October 2020 (n= 1 195 976)



Annex 2: The distribution of confirmed COVID-19 cases in South Africa by date of reporting, 5 March – 4 October 2020 (n= 681 289)



Annex 3: The distribution of confirmed COVID-19 cases in the WHO African region by week of reporting, 25 February – 4 October (n= 1 195 976)

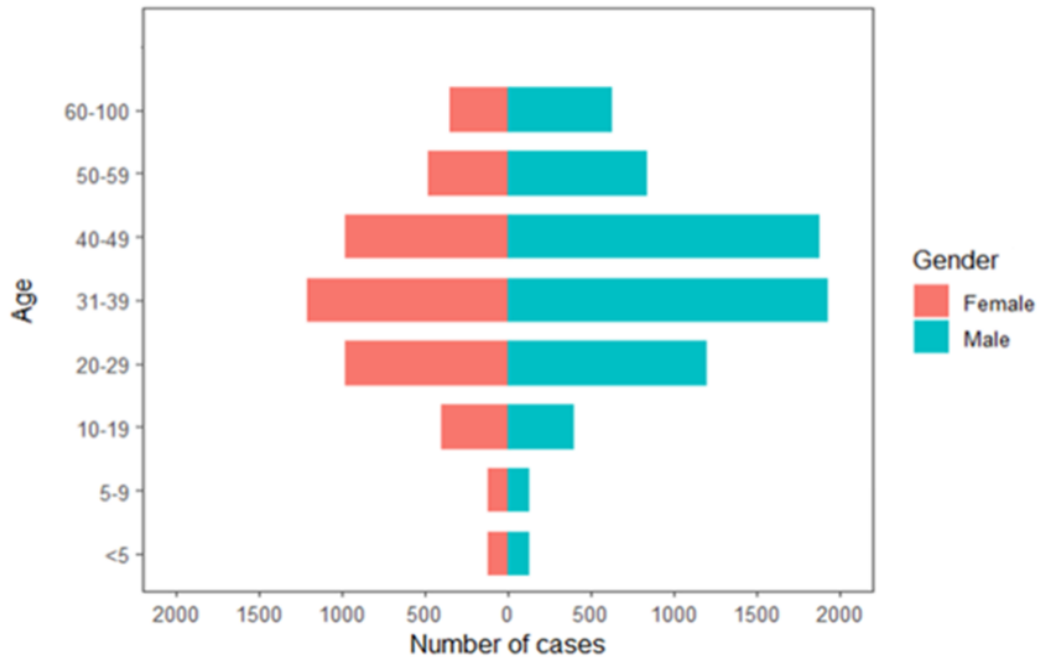


Annex 4: Countries with reported laboratory-confirmed COVID-19 cases and deaths: Data as of 4 October 2020

Country	Total Cases	New Cases	Total Deaths	New Deaths	Recovered Cases	Probable Cases	Case fatality ratio (%)
South Africa	681 289	1 573	16 976	38	614 781	0	2.5
Ethiopia	78 819	959	1 222	8	33 060	0	1.6
Nigeria	59 345	58	1 113	0	50 768	0	1.9
Algeria	52 136	141	1 760	4	36 578	0	3.4
Ghana	46 829	0	303	0	46 060	0	0.6
Kenya	39 427	243	731	3	26 659	0	1.9
Cameroon	20 875	0	418	0	19 523	0	2.0
Côte d'Ivoire	19 849	0	120	0	19 421	0	0.6
Madagascar	16 558	33	232	0	15 413	0	1.4
Senegal	15 094	26	312	0	12 805	0	2.1
Zambia	15 052	79	333	0	14 187	0	2.2
Namibia	11 626	0	123	0	9 429	0	1.1
Democratic Republic of the Congo	10 760	0	274	0	10 237	1	2.5
Guinea	10 754	0	66	0	10 098	0	0.6
Mozambique	9 196	147	66	2	5 852	0	0.7
Uganda	8 808	146	81	2	5 078	0	0.9
Gabon	8 797	0	54	0	8 067	0	0.6
Zimbabwe	7 888	3	228	0	6 359	0	2.9
Mauritania	7 520	3	161	0	7 188	0	2.1
Cabo Verde	6 360	64	65	3	5 416	0	1.0
Malawi	5 786	3	179	0	4 541	0	3.1
Eswatini	5 569	39	111	0	5 127	0	2.0
Angola	5 370	0	185	0	2 429	0	3.4
Congo	5 089	0	89	0	3 995	0	1.7
Equatorial Guinea	5 045	0	83	0	4 879	0	1.6
Rwanda	4 866	14	29	0	3 216	0	0.6
Central African Republic	4 845	0	62	0	1 915	0	1.3
Gambia	3 594	0	115	0	2 226	0	3.2
Mali	3 184	14	131	0	2 479	0	4.1
Botswana	3 172	0	16	0	710	0	0.5
South Sudan	2 726	0	50	0	2 560	0	1.8
Guinea-Bissau	2 362	0	39	0	1 638	0	1.7
Benin	2 357	0	41	0	1 973	0	1.7
Sierra Leone	2 269	10	72	0	1 706	0	3.2
Burkina Faso	2 154	0	59	0	1 397	0	2.7
Togo	1 854	14	48	0	1 392	0	2.6
Lesotho	1 639	0	38	0	874	0	2.3
Liberia	1 348	0	82	0	1 236	0	6.1
Chad	1 217	3	86	1	1 075	0	7.1
Niger	1 200	0	69	0	1 115	0	5.8
Sao Tome and Principe	913	0	15	0	887	0	1.6
Burundi	514	1	1	0	494	0	0.2
United Republic of Tanzania	509	0	21	0	180	0	4.1
Comoros	487	3	7	0	466	0	1.4
Eritrea	398	0	0	0	358	0	0.0
Mauritius	385	0	10	0	355	0	2.6
Seychelles	142	0	0	0	142	0	0.0
Total (N=47)	1 195 976	3 576	26 276	61	1 006 344	1	2.2

NOTE: The WHO AFRO COVID-19 Daily Update presents official data communicated by the national authorities in Member States. The data has been captured up to 23:59 hours of the previous day. Data/information received after 00:00 hours will be reflected in the subsequent update.

Annex 5: The distribution of confirmed COVID-19 cases by gender and age group: Data as of 25 February – 4 October 2020 (n= 11 868)



Annex 6: The cumulative number of confirmed COVID-19 cases and deaths reported in the African continent (AFRO and EMRO Regions), 25 February – 4 October 2020

Country	Cumulative cases	Cumulative deaths	Cumulative recovered	Case fatality ratio (%)
Morocco	133 272	2 330	111 036	1.7
Egypt	103 683	5 981	97 355	5.8
Libya	36 809	592	21 429	1.6
Tunisia	23 453	321	2 541	1.4
Sudan	13 653	836	6 764	6.1
Djibouti	5 419	61	5 349	1.1
Somalia	3 745	99	3 010	2.6
Total (n=7)	320 034	10 220	247 484	3.2
Situation in the African Continent				
African Region	1 195 976	26 276	1 006 344	2.2
Eastern Mediterranean Region	320 034	10 220	247 484	3.2
Overall Total (N=54)	1 516 010	36 496	1 253 828	2.4

© WHO Regional Office for Africa

This is not an official publication of the World Health Organization.

Correspondence on this publication may be directed to:

Dr Benido Impouma

Programme Area Manager, Health Information & Risk Assessment

WHO Emergency Preparedness and Response

WHO Regional Office for Africa

P O Box. 06 Cité du Djoué, Brazzaville, Congo

Email: afrooutbreak@who.int

Requests for permission to reproduce or translate this publication – whether for sale or for non-commercial distribution – should be sent to the same address.

The designations employed and the presentation of the material in this publication do not imply the expression of any opinion whatsoever on the part of the World Health Organization concerning the legal status of any country, territory, city or area or of its authorities, or concerning the delimitation of its frontiers or boundaries. Dotted lines on maps represent approximate borderlines for which there may not yet be full agreement.

All reasonable precautions have been taken by the World Health Organization to verify the information contained in this publication. However, the published material is being distributed without warranty of any kind, either express or implied. The responsibility for the interpretation and use of the material lies with the reader. In no event shall the World Health Organization or its Regional Office for Africa be liable for damages arising from its use.